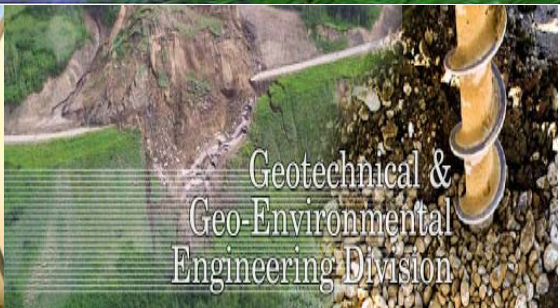


NGE Consultants Pvt. Ltd.

Precision-Quality-Commitment-Innovation



Register Office: 72-A Punjab university town Phase#1, Lahore, Pakistan
Tel: (92-42) 37593804, Fax: (92-42) 7593805 Cell: 03009697582
Email: nge.consultants5@gmail.com Web: www.ngec.com.pk

ABOUT US

Next Generation Engineering (NGE) Consultants PVT Ltd. is one of the progressing Engineering consultant in Pakistan and is capable to provide any and every kind of design services and supervision to our clients with lots of dedication, commitments and challenge of being able to produce the best product with quality standard strictly controlled by the professionals and technical teams to meet with the client's requirements.

NGE Consultants was incorporated in 2012, started by a group of professional and experienced engineers in the fields of electrical, mechanical, civil, agriculture, hydraulics, environment, water resources and architecture.

VISION

Our vision is to be known as a respected Engineering firm, to provide integrated engineering consultancy services to our clients by focusing on the concept of sustainable development.

MISSION

Our mission is to provide clients focused services through our responsible practice of Engineering, always ensuring that integrity, safety and sustainability are at the heart of everything we do. Our dedication to that mission as we strive each day for excellence in bringing our valued client's ideas to life.

CONTACT

NGE Consultants Pvt Ltd.

72 A Punjab University Town-1

P.O. Box: 54000,

Abdulstar Edhi Road, Lahore.

Telephone: 0300-9697582

EXPERTISE

- Electrical Engineering
- Mechanical Engineering
- Computer Engineering
- Civil Engineering

- Agriculture Engineering
- Hydrology
- Environment

SERVICES/ WHAT WE DO?

NGE work both independently and in collaboration with other engineering consulting firms in Pakistan and abroad in associations and joint venture. The increasingly complex and multi-disciplinary nature of development programs often call for the input of highly specialized skills from a number of our divisions, departments and specialist consultants. NGE has always responded effectively by assembling the appropriate mix of skills to match client's needs.

NGE provide services in engineering consultancy sector from conception to completion of projects including but not limited to planning, surveys & investigations, feasibility studies, fundamental design studies including environmental /hydrological/ sedimentation studies etc., detailed engineering design, cost estimation, tender documentation, bid evaluation, construction supervision / rehabilitation including QA/QC, third party validation, project management and contract administration and operation & maintenance in the following engineering disciplines:

1-BUILDING

NGE has been engaged in Architectural & Engineering Design & Analysis and Contract Administration / Supervision of a number of Building Sector projects in Pakistan such as Design and Construction Supervision. NGE has been providing A&E technical services and oversight of infrastructure projects and related engineering activities in the following major domains:

- ❖ Architecture and Town Planning
- ❖ Master Planning
- ❖ Interior Design and landscaping
- ❖ Commercial Buildings and Complexes
- ❖ Hospitals, medical facilities, laboratories, medical research

- ❖ Educational Institutions
- ❖ Housing Schemes
- ❖ Recreation and sports facilities, Stadiums;
- ❖ Libraries
- ❖ Museums
- ❖ Galleries
- ❖ Hostel, Hotels & motels



2-PUBLIC HEALTH ENGINEERING

NGE provides consultancy services for various aspects of Public Health Engineering projects including:

- ❖ Planning, Surveys and Investigations for Municipal and Commercial Water Supply, Sewerage Management, Sanitation and Drainage, Solid Waste Management and Water and Wastewater Treatment and Disposal
- ❖ Master Planning for Improvement of Public Health Infrastructure to meet future needs
- ❖ Environmental Impact Assessment (EIA) Studies
- ❖ GIS Mapping of Water Supply, Sanitation and Solid Waste Management

- ❖ Construction scheduling
- ❖ Detailed Engineering Design of Public Health Engineering Services / Infrastructures
- ❖ Design validation / Analysis through computer software / applications
- ❖ Tender Documents, Specifications & Cost Estimation
- ❖ Construction Management / Supervision
- ❖ Contract Management and Administration



3-TRANSPORTATION

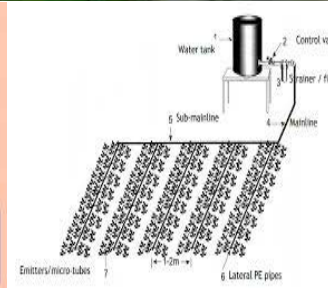
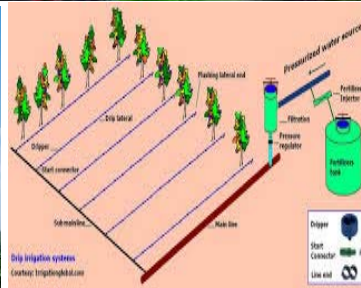
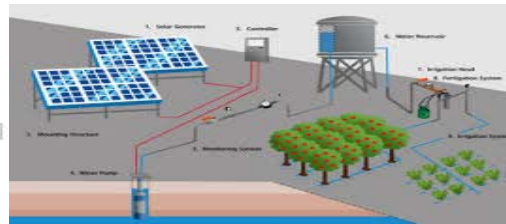
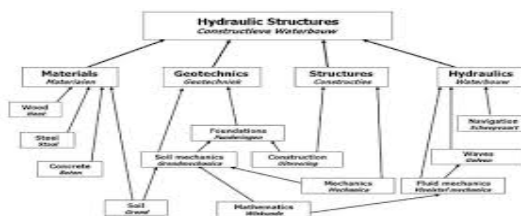
NGE provides consultancy services for various aspects of transportation projects including:

- ❖ Planning and alignment studies
- ❖ Surveys/ investigations and Mapping including GIS database development
- ❖ Environmental Impact Assessment, resettlement action plans
- ❖ Traffic Load Studies
- ❖ Identification of areas for construction materials, construction scheduling
- ❖ Geometric design of horizontal and vertical alignments
- ❖ Design of Flexible and Rigid Pavements
- ❖ Structural and hydraulic design & analysis of road structures & bridges
- ❖ Contract Packaging, Tender Documents, Cost Estimation, Financial Analysis
- ❖ Construction Supervision & Contract Management

3- IRRIGATION & DRAINAGE AND HYDRAULIC STRUCTURES;

NGE has the ability to carry out (independently or through consortia) Feasibility Studies, Detailed Engineering Design, Contract Administration and Construction Supervision of a large number of Irrigation & Drainage and Hydraulic Structures Projects within and outside Pakistan. NGE provides consultancy services for the following sub-sections:

- ❖ Barrages
- ❖ Irrigation Networks
- ❖ Drainage Works
- ❖ Small Dams & Control Structures
- ❖ Canal Lining & Water Courses
- ❖ Flood Protection & River Training Works



4-ENVIRONMENTAL ENGINEERING

NGE possesses extensive experience in preparation and implementation of Environmental and Social Action Plans, Gender Action Plans, Health and Safety Management Plans, Resettlement Action Plans etc. NGE provides consultancy services for various aspects of Environmental projects including:

- ❖ Reconnaissance Surveys
- ❖ Data collection including cadastral surveys, socio-economic surveys
- ❖ Stakeholder meetings
- ❖ Database development & maintenance
- ❖ Public consultation and participation
- ❖ Initial Environmental Examination
- ❖ Environmental Impact Assessment (EIA) Studies
- ❖ Environmental Management and Mitigation Plans
- ❖ Environment & Social Management Frameworks
- ❖ Resettlement Action Plans
- ❖ Grievance Redressal Mechanism
- ❖ Livelihood Restoration
- ❖ Gender Action Plan
- ❖ Health and Safety Management & Monitoring Plans
- ❖ Land Acquisition
- ❖ Area Development Plans
- ❖ Cost Estimation for Implementation of Environment, Social and HSE Plans
- ❖ Implementation of Environmental, Social & HSE Plans

4-WATER TRANSMISSION LINES.



5-RENEWABLE ENERGY SOURCES AND SYSTEMS.

NGE has also assess the technical, economical and logistical feasibility of fuel supplies for biomass and waste to energy plants, and carry out resource assessments for wind, solar and hydro projects. We cover all technical, commercial, regulatory and environmental aspects of renewable projects. We assist government agencies and provide advice to companies seeking to expand their energy portfolio or acquire renewable assets. NGE provides consultancy services for various aspects of renewable energy sources and systems projects including:

- ❖ Wind farms,
- ❖ Biomass
- ❖ Groundwater solutions to geothermal,
- ❖ Solar
- ❖ Tidal



6-OIL & GAS DEVELOPMENT, STORAGE, TRANSMISSION AND DISTRIBUTION SYSTEMS

NGE provide invaluable expertise, advice and support throughout all the key stages of project analysis and implementation regarding the Oil and Gas. NGE provides following consultancy services:

- ❖ Feasibility study of Oil & Gas Development, Storage, Transmission And Distribution Systems
- ❖ Review of feasibility study, permits and licenses
- ❖ Analysis of process performance
- ❖ Estimation of capital costs, implementation schedule, operating costs and turnaround schedules
- ❖ Financial modelling support



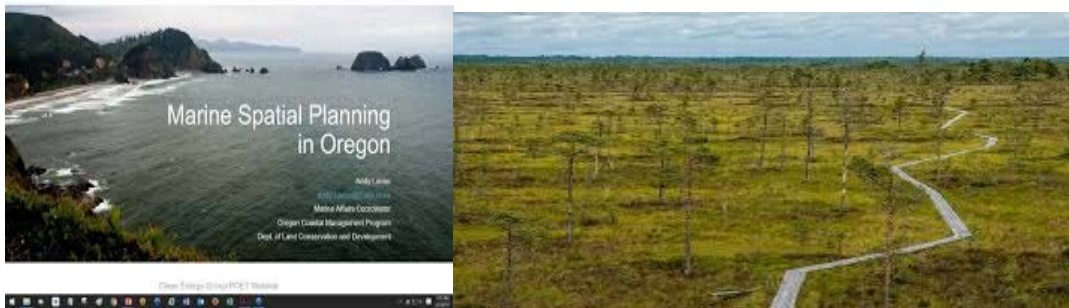
7-COMMUNICATION SYSTEMS, TELEPHONE, TELEGRAPH, TELEX

NGE consultant helps organizations design, implement, and upgrade cost-effective telecommunication systems. NGE provides following consultancy services:

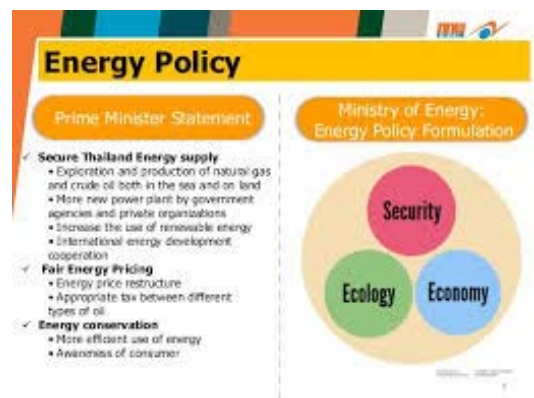
- ❖ Planning, design, and implementation and upgrade of very large and complex telecommunications systems
- ❖ To implement, upgrade, and repair telecom systems,
- ❖ Voice and video applications
- ❖ Telephone installation, support and maintenance
- ❖ LAN/WAN operations
- ❖ Radio systems
- ❖ Countywide emergency communications coordination



8-ENERGY PLANNING CONSERVATION AND DEVELOPMENT



1.



9-AGRO INDUSTRIES/FOOD PROCESSING.

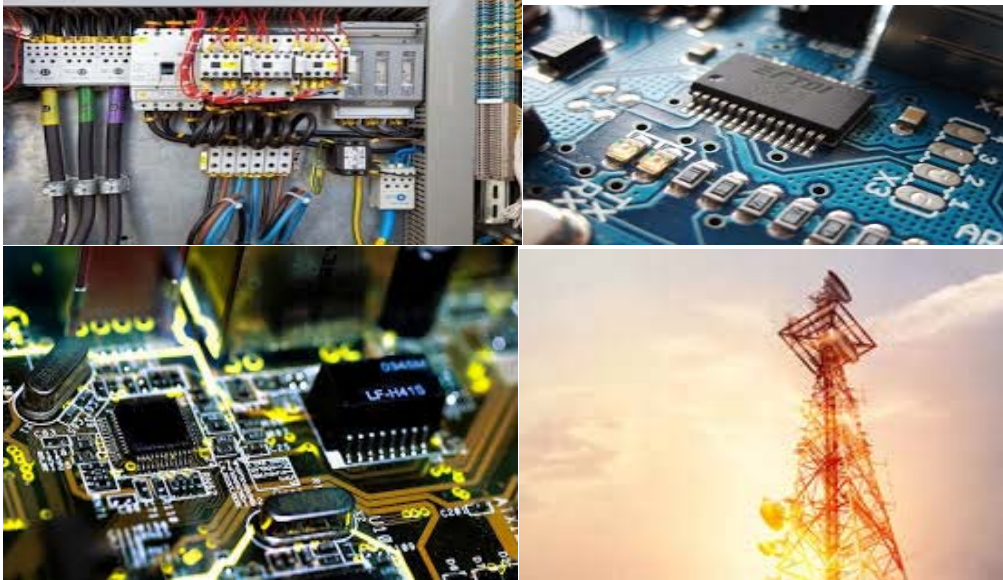
NGE is engaged in execution of various types of projects, our core competence lies in agro processing, oil processing and food processing industry. We provide agriculture consultancy services to our clients by identify the areas and suggest them different ways to improve their production, operational efficiency, recoveries and quality of final outputs.



10-ELECTRICAL AND ELECTRONIC INDUSTRY

NDC provides consultancy services for various aspects of power generation and transmission covering:

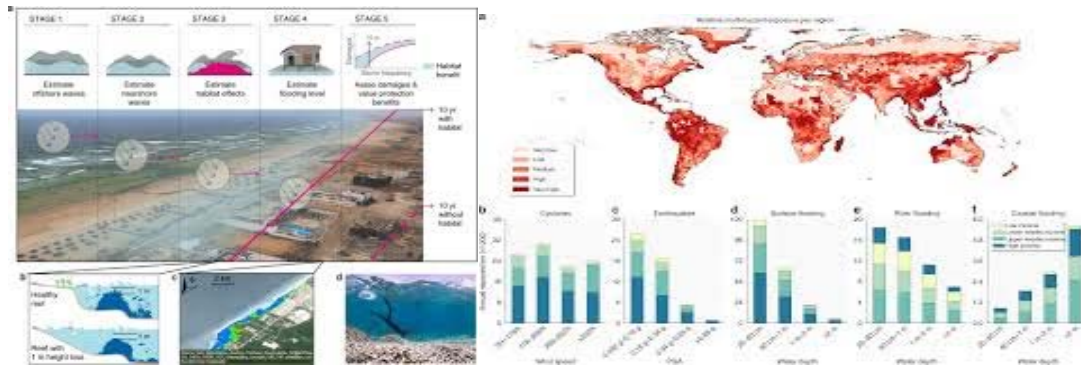
- ❖ Planning and Alignment Studies
- ❖ Environmental Impact Assessment
- ❖ Environmental Management and Mitigation Plans
- ❖ Resettlement studies and Resettlement Action Plans
- ❖ Feasibility and Detailed Engineering Design
- ❖ Tender Documents
- ❖ Factory Acceptance Tests
- ❖ Procurement of Equipment and Accessories
- ❖ Installation, testing and commissioning
- ❖ Protection and Control Systems
- ❖ Contract Management and Administration



11-SURVEYING, VALUATION AND LOSS ASSESSMENT

NGE provide a complete range of services in engineering surveys and mapping. NGE own modern survey equipment and vehicles with competent surveyors to conduct plane and geodetic survey, land boundary and cadastral survey, topographic survey, route survey for canals and highways, hydrographic surveys and pre/post construction surveys for all types of engineering works. The services are supervised by highly qualified & experienced geotechnical engineers and geologists, which allow us to successfully undertake ground investigations for a wide variety of:

- ❖ Foundation Engineering
- ❖ Slope Stability Analysis
- ❖ Seepage Analysis
- ❖ Groundwater Modelling
- ❖ Geological Mapping
- ❖ Seismic Studies
- ❖ Rock Support Analysis
- ❖ Laboratory and Field Studies



MANAGEMENT

1. Engr. Syed Munir Husnain

- B.Sc. Mechanical Engineering ,UET Lahore(2004)
- MSc. Mechanical Engineering, Canada)(2015)
- Member Pakistan Engineering Council. PEC
- Project Management Professional (PMP) License 1324819 certified by Project Management Institute, USA
- Certified Estimating Professional (CEP) License 259300 certified by and member of AACE International, USA

Chief Executive



Syed Munir Husnain has over 15 years association with certified project management professional and certified estimation professional in Gulf and Canada with experience in leading project controls for conceptual design, front end engineering design, and Engineer-Procure-Construct projects. He is proficient in project planning, scheduling, cost control, project coordination, contract management, schedule and cost risk analysis, change management and capital cost estimation.

Projects

- **Project name R2020 Dubai Metro Project**
Aug 2016 – Dec 2017
- **Project name FEED for Garraf Full Field Development – PETRONAS**
Mar 2013 – May 2016
Project description
Scope of Work included FEED of Well pads, Produced and River Water Treatment and injection system, Oil & LPG Export Pipelines, OHTL and Substation.

- **Project name Provision of Engineering Services for Majnoon Oilfield Iraq**
Sep 2011 – Feb 2015
Project description
Scope of Work comprise of Engineering and construction services for up gradation of crude oil processing and storage facility.
Client: Shell Iraq B.V.
- **Project name EPC Work for Urea Debottlenecking**
Project description
Scope of work comprises of Modification in Existing Urea Plant; installation of 400 MTPD CO2 Recovery unit, 2500 MTPD granulation unit & required utilities to support the aforementioned additions and modification.
Client: Ruwais Fertilizer Industries (Fertil), ADNOC Group of Company, UAE
PMC : Worley Parsons, UAE
- **Project name Elixier-2 Project Air Separation Plant for Nitrogen Generation**
Project description
Scope includes construction of two train of Air Separation unit having Nitrogen generation capacity of 16 mmscfd along with supported utilities.
Client: Elixier, JV of Linde Group & ADNOC UAE
Engineer & Supervisor: Linde Engineering Middle East LLC

I am Best in Following

1. Oil & Gas Project Planning & Scheduling
2. Project Cost Estimation (TIC), Project Cost Control and Schedule Risk Analysis
3. Project Contract Management

Twitter Account:

Facebook Account:

LinkedIn Account:

<https://www.linkedin.com/in/munir-syed-8b507423/>

2. Engr. Dr. Muhammad Yaseen

Engr. Dr. Muhammad Yaseen, got the Ph.D degree in Water Resources Engineering from Centre of Excellence in Water Resources Engineering, University of Engineering and Technology, Lahore during 2016. He did M.Sc. in Water Resources Engineering from the same institute. He did B.Sc. in Agricultural Engineering from University of Agriculture Faisalabad in 2007. Moreover, he has served as a Research Fellow (six months) in Faculty of Geo-Information Science and Earth Observation (ITC) University of Twente, The Netherlands. During stay over there he worked on Integrated Water Resources Management using remote sensing and hydrological models. Engr. Dr. Muhammad Yaseen's professional experience has been in Decision Support System and Hydrological Modeling, Integrated Flood Modeling and Management, Integrated Water Resources Management, Soil and Water Conservation, Sustainable Irrigation and Drainage System Management, Groundwater Modeling and Management. Climate change-Impact Assessment and Adaptation Strategies in Water, Energy and Agriculture, Disaster Risk Management & its allied disciplines, He is also well-equipped with HEC-HMS, SRM, Arc-SWAT, ModFlow, HEC-RAS, SDSM, Arc-GIS. He is registered Member Pakistan Engineering Council PEC; The institution of Engineers Pakistan; Pakistan engineering congress.



I am Best In Following

1. Modeling, designing and management of water resources allied infrastructures with the state of art of models
2. Climate change-impact assessment and adaptation strategies in water, energy and agriculture, disaster risk management & its allied disciplines
3. Design, establishment and operation of soil and water conservation measures, technologies, strategies and policies

Twitter Account:

Take a look at Engr. Dr. Muhammad Yaseen (@EngrDrMuhammad1):

<https://twitter.com/EngrDrMuhammad1?s=08>

Facebook Account:

<https://www.facebook.com/yaseen.cimr>

LinkedIn Account:

<https://www.linkedin.com/in/engr-dr-muhammad-yaseen-64045b1a8/>

3. Engr. Syed Ehtesham Ul Hasan

I got my professional education from Engineering University Lahore in Electrical Engineering with major in Electronics and Communication in 2006. Started my career with Chinese multinational company Huawei Technologies as NSS Engineer in 2006. In 2007, got opportunity with the biggest telecom vendor Ericsson as an Experienced Engineer. Ericsson polished my abilities and provided me opportunity to work both on local and global projects. As a senior Telecom engineer, I worked in Middle East, Africa, East Africa and Europe on leading operators such as MTN, Orange, Vodafone and Etisalat.



Worked as senior consultant for Korek telecom in Iraq from 2013 onwards. Also, I am a resided member of Pakistan Engineering Council, Institute of Engineers Pakistan and Pakistan Engineering Congress.

Specialties:

Leadership, Competence Development, Project Management, Operations and Consulting, Planning and Design, Resource budgeting.

I am Best In Following

1. Project Planning and Design, Management, Operations and Consulting
2. Resource budgeting
3. Leadership, Competence Development

Twitter Account:

<https://twitter.com/syedehteshamulhasan>

Facebook Account:

<https://www.facebook.com/syed.e.hasan.9>

LinkedIn Account:

<https://www.linkedin.com/in/syed-ehtesham-ul-hasan-5061978/>

Engr. Yaser Shabbier**Director**

- BSc Computer Engineering UET,Lahore 2007
- Member Pakistan Engineering Council PEC/
- Huawei Certified on MS Master Delivery Business, Project Management, Network Security Management, SPMS and O&M Management.
- Managerial control Elite Team Training
- Role Perception training for Frontline Managers
- MS Transformation
- Understanding the Roles of MS PD
- Operation Management (O&M)
- Maintenance TD / Backup TD / Key TL” position responsibility



Working in mobile communication and enterprise business industry with an experience of over 13 years which includes positions both in operator and vendor. Accomplished track record of Techno-Managerial engagements in ICT sector initiating the career at grass root as systems Engineer and rising to the current level of Director Operations with diversified experiences in handling various large scale Managed Services initiatives within 2G/3G/4G environment and spanning over all the domains like RAN, CORE, Transport, IN,VAS , IT-BSS and Field Maintenance.

I am Best in Following

1. Managed Services initiatives within 2G/3G/4G environment and spanning over all the domains like RAN, CORE, Transport, IN,VAS , IT-BSS and Field Maintenance
2. Maintenance TD / Backup TD / Key TL” position responsibility
3. Operation Management (O&M)

Twitter Account:**Facebook Account:****LinkedIn Account:**

4. Engr. Syed Naeem Husnain

- M.Sc. Water Resources Management, UET Lahore
- B.Sc. Agriculture Engineering, 2007
- NEBOSH International General Certificate in Occupational Health and Safety, 2015, conducted by TÜV Nord Abu Dhabi, UAE
- Member Pakistan Engineering Council PEC/2784
- The institution of Engineers Pakistan
- Pakistan engineering congress

Engr. Syed Naeem Husnain, got the M.sc degree in Water Resources Management from Centre of Excellence in Water Resources Engineering, University of Engineering and Technology, Lahore during 2018. He did B.Sc. in Agricultural Engineering from University of Agriculture Faisalabad in 2007. Over 13 years of working experience in the field of “On Farm Water management Projects” in Pakistan & UAE involved in; consulting, monitoring, designing, execution and management of irrigation projects skills of delegating a multi-task project and team of professionals. Additionally experience in field of landscaping and farm development Projects. Extensive experience in providing professional and technical services as a key member of team for various On Farm Water Management & Irrigation Dept. Projects.



I am Best in Following

1. Designing, execution, management and monitoring of irrigation and drainage allied infrastructures/system
2. Occupational health and safety management system
3. Designing development and management landscaping system.

Twitter Account:

[@Syednaemgilla4](https://twitter.com/Syednaemgilla4)

Facebook Account:

<https://www.facebook.com/naemhusnain>

LinkedIn Account:

<https://www.linkedin.com/in/syed-naem-husanin-7ab26b3a/>

ASSOCIATED DIRECTORS

1. Engr. Yawar Hameed

- B.Sc. Civil Engineering UET, Lahore
- Principal Ground Water Specialist; Water Quality Monitoring/ Studies Report

2. Muhammad Ikram

- Ex. Principal, National Institute of Research in Soils & Geometrics Project-Soil Survey of Pakistan
- M.Sc (Chemistry) from Government College University Lahore
- LLB from Punjab University Lahore
- Postgraduate Diploma in soil survey using Aerial Photographs and other Remote Sensing Techniques from International Institute of Aerospace and Earth Science, Enschede- The Netherlands (Professional Masters)
- Field training in Soil Survey from Malaga, Spain
- Computer course from National College of Computer Science Jail Road, Lahore
- GPS training from IIMI, Pak. Lahore
- Different courses about management, financial skills, marketing and negotiation skills, and report writing from Pakistan Institute of Management Sciences (PIMS), Lahore
- Human Resource Management Course from Cabinet Division, Lahore
- GIS/Remote Sensing Techniques from EGIS Dhaka in
- Collaboration with I.T.C, the Netherlands
- GIS/Remote Sensing training from SUPARCO Islamabad
- Training on Project/Monitoring & Evaluation System (PMES) for Result Based Management (RMB) conducted by Planning Commission Islamabad
- Cash Plan preparation conducted by Planning Commission Islamabad

3. Engr. Ahmad Qureshi

- MSc in (Environment Engineering), Technical University of Hamburg – Harburg, Germany
- Bachelor of Engineering (Civil Engineering), NED University of Engineering and Technology, Karachi,

- ISO/ IEC 27001: 2005 Auditor/ Lead Auditor Course [IRCA approved] Dubai, UAE (5 day Course)
- NEBOSH International General Certificate in Occupational Health and Safety, 2013, conducted by TÜV Nord Germany in Abu Dhabi.
- HS142-Certified Industrial Safety Professional (CISP), course conducted by TÜV Nord Germany in Abu Dhabi in 2013
- OSHA 30-Hours General Industrial Safety and Health, course conducted by TÜV Nord Germany in Abu Dhabi in 2013

Carrying out EIA for mega development projects, offshore and onshore oil and gas sectors projects. Developing Plans for Environmental baseline survey, both marine and Terrestrial Surveys .Developing Environmental Monitoring Plans. Developing Environmental Management Plan.BAT Assessment – Helping clients to select best technology ensuring compliance with applicable environmental regulations. Environmental/HSE Compliance Audits. Air Dispersion/Noise Modelling.Managing Hydrodynamics Modelling Studies

Development of HSE Governance and Regulations of oil and gas sector

Incident and investigation and root cause analysis expertise. Design safety training courses

Identifying EHS hazards in Risk Assessment workshops (ENVID) involving contractors and management to ensure that existing control measures ensuring EHS risks within As Low As Reasonably Possible (ALARP)

4. Mr. Syed Kaleem Husnain

- B.Sc. Agricultural Sciences
- M.S Environmental Science, UK
- HSE Consultant with more than 8 years of experience in various fields of environmental management. Throughout his career has been engaged in consultancy projects presenting clarity in the concepts of EIA, Knowledge of the applicable Acts, Rules and regulations, Domain knowledge of the industry /sector for which EIAs are to be prepared, Broad understanding of the environmental aspects related to the industry /sector. Acquired expertise in testing and monitoring water quality and provided and an understanding of contaminants such as soil, groundwater, sediments or surface water for the general protection of human health.
- Course field trips and volunteering activities have also added to my abilities to collect and record data for analysis and increase my g knowledge of the current issues,

policies and legislation of environmental impact assessment and soil and ground water.

- Success in units requiring scientific report writing skills have highlighted the importance I place on being methodical, accurate and complying with regulatory standards. And he has also learnt knowledge of fundamental concepts of Geographic Information Systems and remote sensing and ability to use a Global Positioning System and strong ability to maintain work-related records and prepare reports.

ON BOARD CONSULTANTS

- **Prof. Dr. Iftikhar Ahmad**
Ph.D Earth & Environmental Sciences
Expertise: Hydrology and sedimentation, Reservoir Design and Operation, Economics of Water Resources Projects
- **Engr. Prof. Dr. Gulam Nabi**
Ph.D Water Resources Engineering
Fluvial Hydraulics, Sediment Transport, Hydraulic and Sediment Transport Modeling, Irrigation System Management, River System Analysis
- **Engr. Dr. Yasir Latif**
Ph.D Engineering Hydrology
Expertise: Hydrological Modeling, Remote Sensing and Field based Glacier Monitoring
- **Engr. Dr. Ijaz Ahmad**
Ph.D Hydropower and Civil Engineering
Expertise: Planning and Development of Hydropower projects, Hydro-Economic, Water Allocation Optimization
- **Engr. Muhammad Hassan Rehman**
M.Sc Engineering Hydrology
Expertise: Hydrological Modeling, Irrigation System Design and Evaluation,
- **Dr. Muhammad Imran Azam**
Ph.D Engineering Hydrology
Expertise: Hydrological Modeling, Remote Sensing and Field based Glacier Monitoring

ASSOCIATED FIRM

- G3 Engineering Consultants (Pvt) Ltd.



- Team Consultants Pvt.Ltd.



- Rehman Habib Consultants



Rehman Habib Consultants

- Mascon Associates (Pvt) Ltd.



- Gridinfo Ltd. United Kingdom (UK)



CLIENTS

- Planning and Development, Punjab Government
- QESCO (Quetta Electric Supply COOPERATION)
- University of the Punjab, Lahore
- Water & Power Development Authority (WAPDA)
- Punjab Irrigation Department
- Asian Development Bank (ADB)
- National Highway Authority (NHA)
- Water and Sanitation Agency (WASA)
- United States Agency for International Development (USAID)

EXTERNAL ELECTRIFICATION PROJECTS

- Deposit Work Estimation, Load Assessment Sheet & Line Diagram of Plaza at Akhtar Muhammad Road.
- Deposit Work Estimation, Load Assessment Sheet & Line Diagram for Construction of Housing Society at Taftan Bypass.
- Deposit Work Estimation, Load Assessment Sheet & Line Diagram of Construction of Building at Balochistan University Jungle Bagh Campus
- Deposit Work Estimation, Load Assessment Sheet & Line Diagram for Construction of Flats in A1 City Quetta
- Deposit Work Estimation, Load Assessment Sheet & Line Diagram for Construction of Plaza at Eastern Bypass Marroof Town Quetta
- Deposit Work Estimation, Load Assessment Sheet & Line Diagram for Construction of Housing Scheme at Saranan Road Pishin
- Deposit Work Estimation, Load Assessment Sheet & Line Diagram for Construction of Plaza at GPO Chowk Quetta
- Deposit Work Estimation, Load Assessment Sheet & Line Diagram for Construction of Arbab Shopping Center at Kirani Road Quetta
- Deposit Work Estimation, Load Assessment Sheet & Line Diagram for Construction of Housing Apartments at Qambrani Road Quetta
- Deposit Work Estimation, Load Assessment Sheet & Line Diagram for Construction of Iqbal Center at Sirki Road Quetta.
- Deposit Work Estimation, Load Assessment Sheet & Line Diagram for Construction of Jalaludin Plaza at Sirki Road Quetta
- Deposit Work Estimation, Load Assessment Sheet & Line Diagram for Construction of Plaza at Jattak Road Quetta
- Deposit Work Estimation, Load Assessment Sheet & Line Diagram for Construction Of Jinnah Apartment at Abdullah Pal Street Jinnah Road Quetta

- Deposit Work Estimation, Load Assessment Sheet & Line Diagram for Construction Of Plaza at Hazara Town Quetta
- Deposit Work Estimation, Load Assessment Sheet & Line Diagram for Construction of Plaza at Nawa Killi Quetta
- Deposit Work Estimation, Load Assessment Sheet & Line Diagram for Construction Of Plaza at Shara e Iqbal Quetta
- Deposit Work Estimation, Load Assessment Sheet & Line Diagram for Construction of Plaza at Spinny Road Quetta
- Deposit Work Estimation, Load Assessment Sheet & Line Diagram for Construction Of Yaseen Plaza at Sirki Road Quetta
- Deposit Work Estimation, Load Assessment Sheet & Line Diagram for Construction of Plaza I/R Bangal Khan at Sirki Road Quetta
- Deposit Work Estimation, Load Assessment Sheet & Line Diagram for Construction of Qadir Plaza at Sirki Road Quetta
- Deposit Work Estimation, Load Assessment Sheet & Line Diagram for Construction of JAN MALL at Shara e Iqbal Quetta
- Deposit Work Estimation, Load Assessment Sheet & Line Diagram for Construction of New Model Housing Scheme at Quetta
- Deposit Work Estimation, Load Assessment Sheet & Line Diagram for Construction of Plaza at Chashma Achozai Quetta
- Deposit Work Estimation, Load Assessment Sheet & Line Diagram for Construction of New Blocks at Agricultural University Quetta
- Deposit Work Estimation, Load Assessment Sheet & Line Diagram for Construction of Al Misbah Housing Apartments at Airport Road Quetta
- Deposit Work Estimation, Load Assessment Sheet & Line Diagram for Construction of Badrudin Plaza at Western BYPASS Quetta
- Deposit Work Estimation, Load Assessment Sheet & Line Diagram for Construction of Green Plaza at Double Road Quetta

- Deposit Work Estimation, Load Assessment Sheet & Line Diagram for Construction of Plaza at Saryab Road Near Burma Hotel Quetta
- Deposit Work Estimation, Load Assessment Sheet & Line Diagram for Construction of Commercial Center at Sibi Road Quetta
- Deposit Work Estimation, Load Assessment Sheet & Line Diagram for Construction of Commercial Plaza at Sattelite Town
- Deposit Work Estimation, Load Assessment Sheet & Line Diagram for Construction of Shopping Plaza at Kuchlak Road Quetta
- Deposit Work Estimation, Load Assessment Sheet & Line Diagram for Construction of Asia Plaza At Zonki Ram Road
- Deposit Work Estimation, Load Assessment Sheet & Line Diagram for Construction of Asia Plaza At Zonki Ram Road
- Deposit Work Estimation, Load Assessment Sheet & Line Diagram for Construction of Plaza at Pashtoonabad Quetta
- Deposit Work Estimation, Load Assessment Sheet & Line Diagram for Construction of Home Land Housing Society at Hazara Town Quetta
- Deposit Work Estimation, Load Assessment Sheet & Line Diagram for Construction of Plaza at Wali Jan Etihad Colony Quetta
- Deposit Work Estimation, Load Assessment Sheet & Line Diagram for Construction of Plaza at Wali Jan Etihad Colony Quetta
- Deposit Work Estimation, Load Assessment Sheet & Line Diagram for Construction of Norani Plaza at Shahwak Shah Road Quetta
- Deposit Work Estimation, Load Assessment Sheet & Line Diagram for Construction of Shops Near Benazir Park Samangli Road Quetta
- Deposit Work Estimation, Load Assessment Sheet & Line Diagram for Construction of Bakhtyar Mall at M. A. Jinnah Road Quetta

- Deposit Work Estimation, Load Assessment Sheet & Line Diagram for Construction of Comfort Luxury Apartments at Quarry Road Quetta
- Deposit Work Estimation, Load Assessment Sheet & Line Diagram for Extension of City Hospital at Double Road Near Imdad Chowk Quetta
- Deposit Work Estimation, Load Assessment Sheet & Line Diagram for Extension of City Hospital at Double Road Near Imdad Chowk Quetta
- Deposit Work Estimation, Load Assessment Sheet & Line Diagram for Construction of Shops, Flats and Offices at Thana Road Quetta
- Deposit Work Estimation, Load Assessment Sheet & Line Diagram for Construction of Shops at Khushal Road Quetta
- Deposit Work Estimation, Load Assessment Sheet & Line Diagram for Construction of Waheed Apartments at Jan Muhammad Road Quetta.